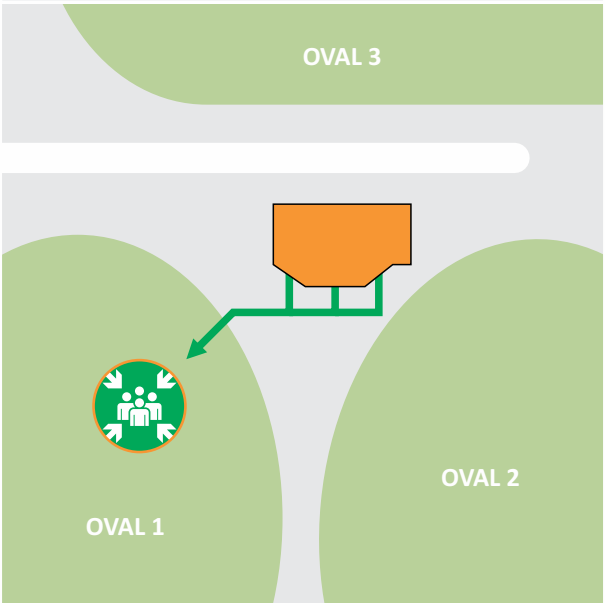


GROUND LEVEL



ASSEMBLY AREA

OVAL 1

EVACUATION PROCEDURES

REMOVE FROM IMMEDIATE DANGER

- If an emergency incident occurs, move a safe distance away from the danger.
- Prevent others from entering the area and alert surrounding people.
- If safe and trained to do so, attempt to extinguish the fire/contain the emergency incident.
- Continually assess the situation and do not put yourself or others at risk.

NOTIFY EMERGENCY SERVICES

- Dial 000

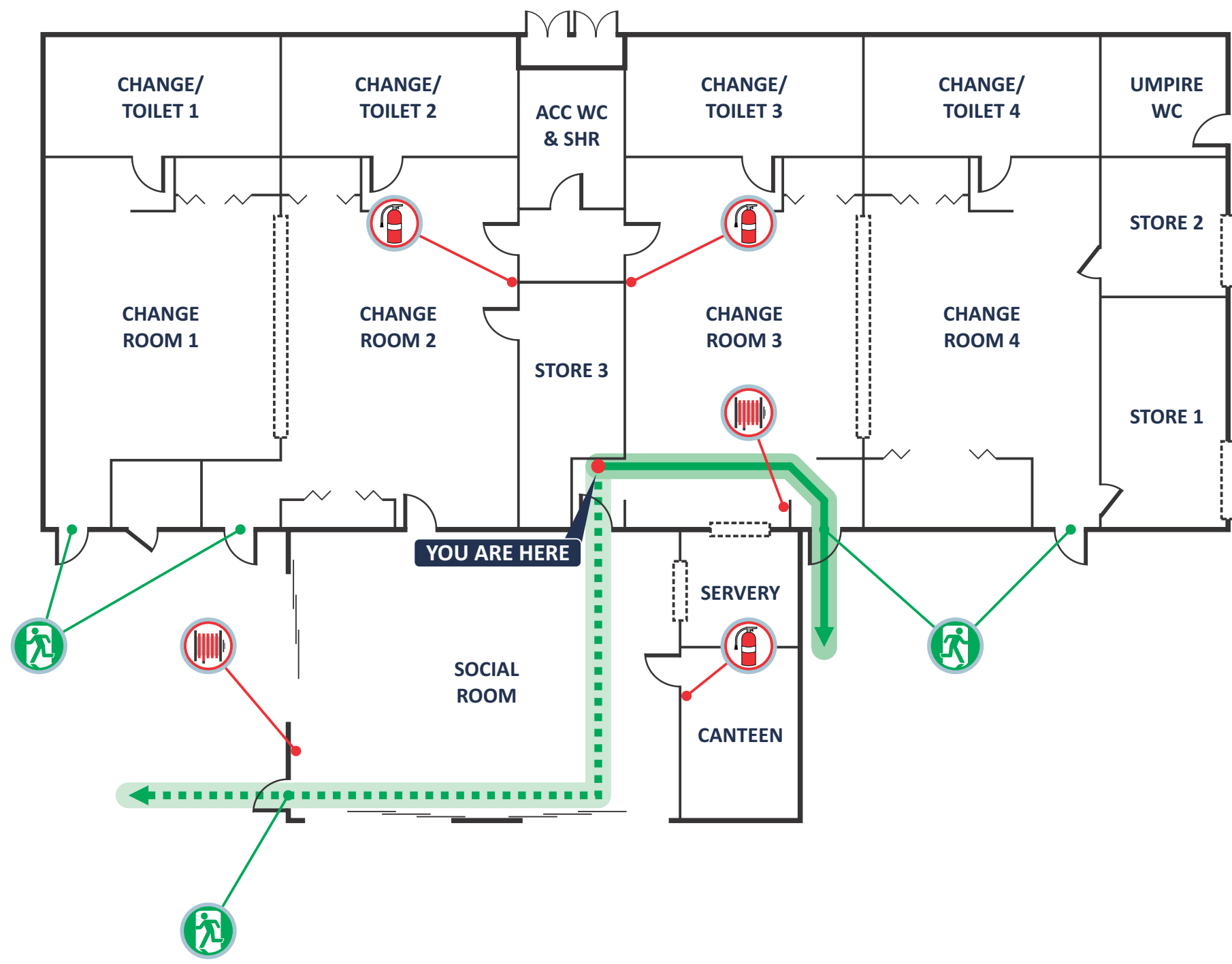
EVACUATE THE BUILDING

- In the event of the smoke, fire or emergency incident worsening, EVACUATE immediately, via the nearest safe exit.
- When the area has been evacuated, all doors and windows should be closed to contain the smoke/fire. Do not obstruct access to Exits.

PROCEED TO THE ASSEMBLY AREA

- Refer to Site Plan and await instructions from the responding Emergency Services.

EVACUATION DIAGRAM



LEGEND

Fire Extinguisher
DCP

Fire Hose
Reel

Exit

Primary
Evacuation Route

Secondary
Evacuation Route

EMERGENCY SERVICES

DIAL 000

IN CASE OF FIRE

R

RESCUE

A

ALARM

C

CONTAIN

E

EVACUATE

P

PULL

A

AIM

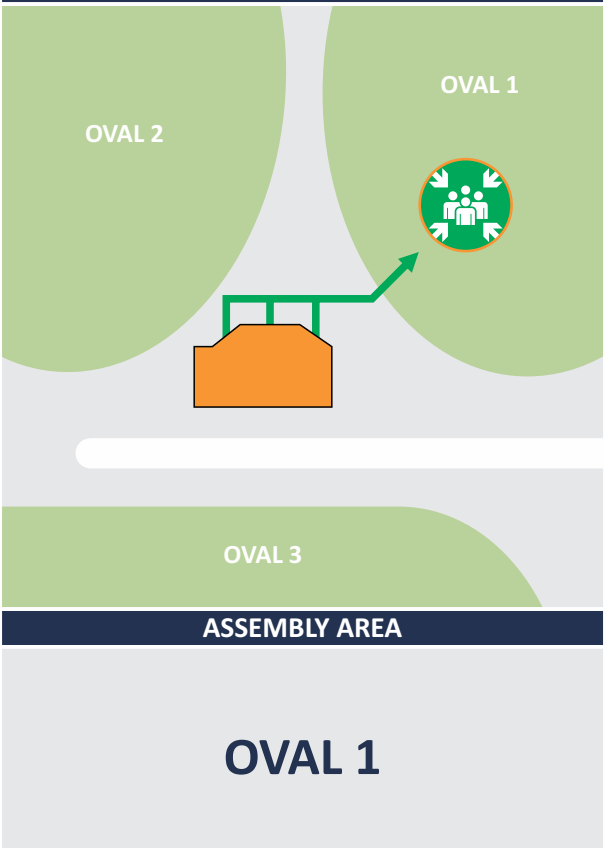
S

SQUEEZE

S

SWEEP

GROUND LEVEL



EVACUATION PROCEDURES

REMOVE FROM IMMEDIATE DANGER

- If an emergency incident occurs, move a safe distance away from the danger.
- Prevent others from entering the area and alert surrounding people.
- If safe and trained to do so, attempt to extinguish the fire/contain the emergency incident.
- Continually assess the situation and do not put yourself or others at risk.

NOTIFY EMERGENCY SERVICES

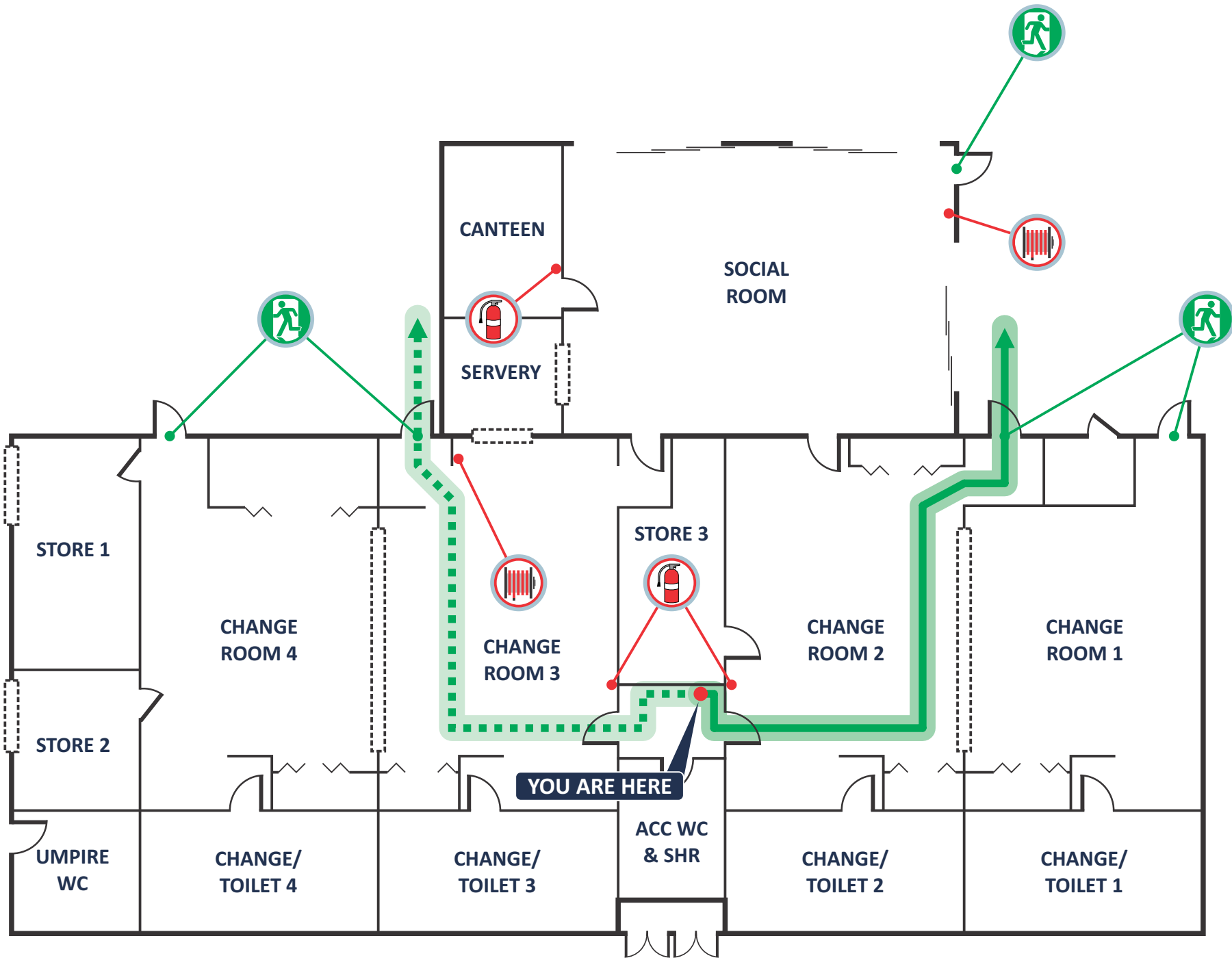
- Dial 000

EVACUATE THE BUILDING

- In the event of the smoke, fire or emergency incident worsening, EVACUATE immediately, via the nearest safe exit.
- When the area has been evacuated, all doors and windows should be closed to contain the smoke/fire. Do not obstruct access to Exits.

PROCEED TO THE ASSEMBLY AREA

- Refer to Site Plan and await instructions from the responding Emergency Services.



LEGEND

Fire Extinguisher
DCP

Fire Hose
Reel

Exit

Primary
Evacuation Route

Secondary
Evacuation Route

EMERGENCY SERVICES

DIAL 000

IN CASE OF FIRE

R

RESCUE

P

PULL

A

ALARM

A

AIM

C

CONTAIN

S

SQUEEZE

E

EVACUATE

S

SWEEP

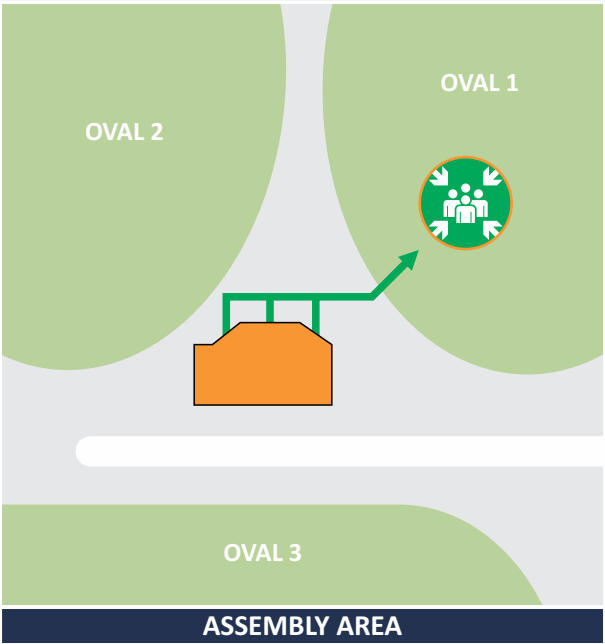
KING GEORGE PAVILION

70 EAST BOUNDARY RD,
BENTLEIGH EAST VIC 3165

EVACUATION DIAGRAM



GROUND LEVEL



OVAL 1

EVACUATION PROCEDURES

REMOVE FROM IMMEDIATE DANGER

- If an emergency incident occurs, move a safe distance away from the danger.
- Prevent others from entering the area and alert surrounding people.
- If safe and trained to do so, attempt to extinguish the fire/contain the emergency incident.
- Continually assess the situation and do not put yourself or others at risk.

NOTIFY EMERGENCY SERVICES

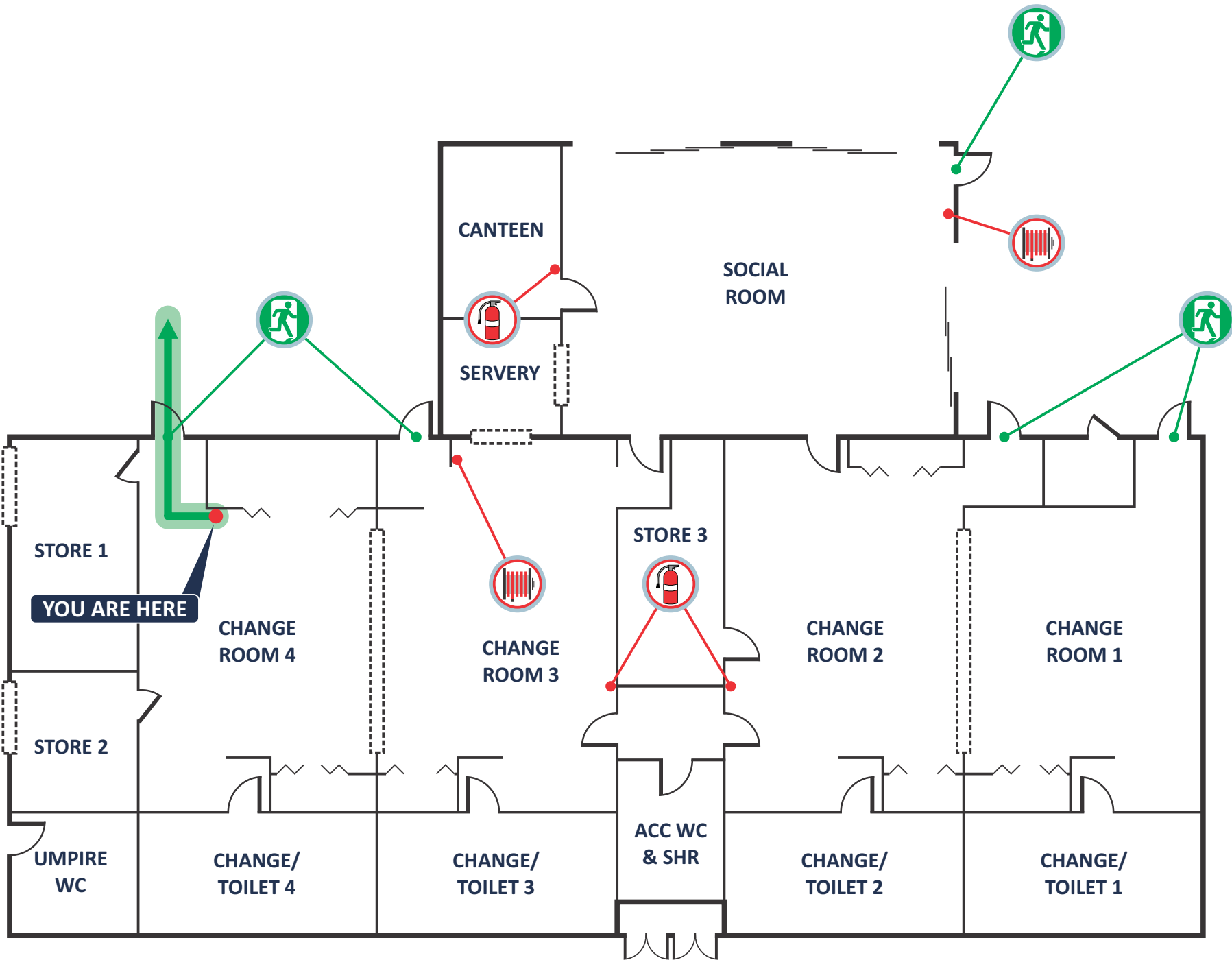
- Dial 000

EVACUATE THE BUILDING

- In the event of the smoke, fire or emergency incident worsening, EVACUATE immediately, via the nearest safe exit.
- When the area has been evacuated, all doors and windows should be closed to contain the smoke/fire. Do not obstruct access to Exits.

PROCEED TO THE ASSEMBLY AREA

- Refer to Site Plan and await instructions from the responding Emergency Services.



LEGEND

- Fire Extinguisher DCP
- Fire Hose Reel
- Exit
- Primary Evacuation Route

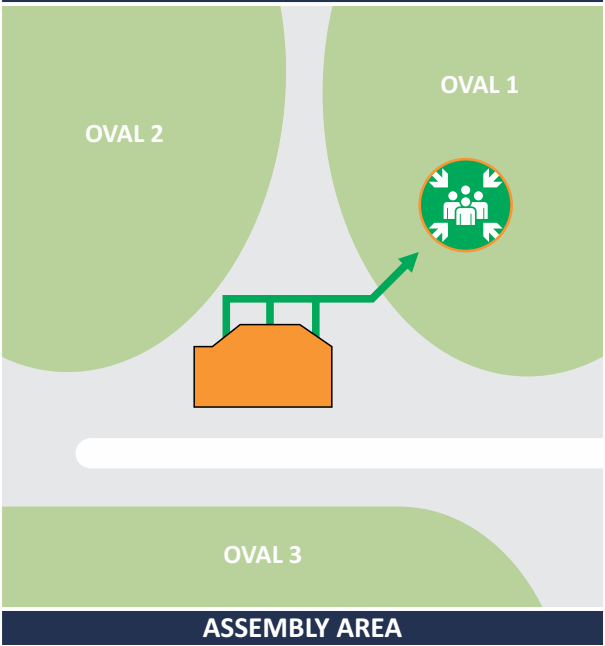
EMERGENCY SERVICES

DIAL 000

IN CASE OF FIRE

- | | |
|----------------------|---------------------|
| R
RESCUE | P
PULL |
| A
ALARM | A
AIM |
| C
CONTAIN | S
SQUEEZE |
| E
EVACUATE | S
SWEEP |

GROUND LEVEL



OVAL 1

EVACUATION PROCEDURES

REMOVE FROM IMMEDIATE DANGER

- If an emergency incident occurs, move a safe distance away from the danger.
- Prevent others from entering the area and alert surrounding people.
- If safe and trained to do so, attempt to extinguish the fire/contain the emergency incident.
- Continually assess the situation and do not put yourself or others at risk.

NOTIFY EMERGENCY SERVICES

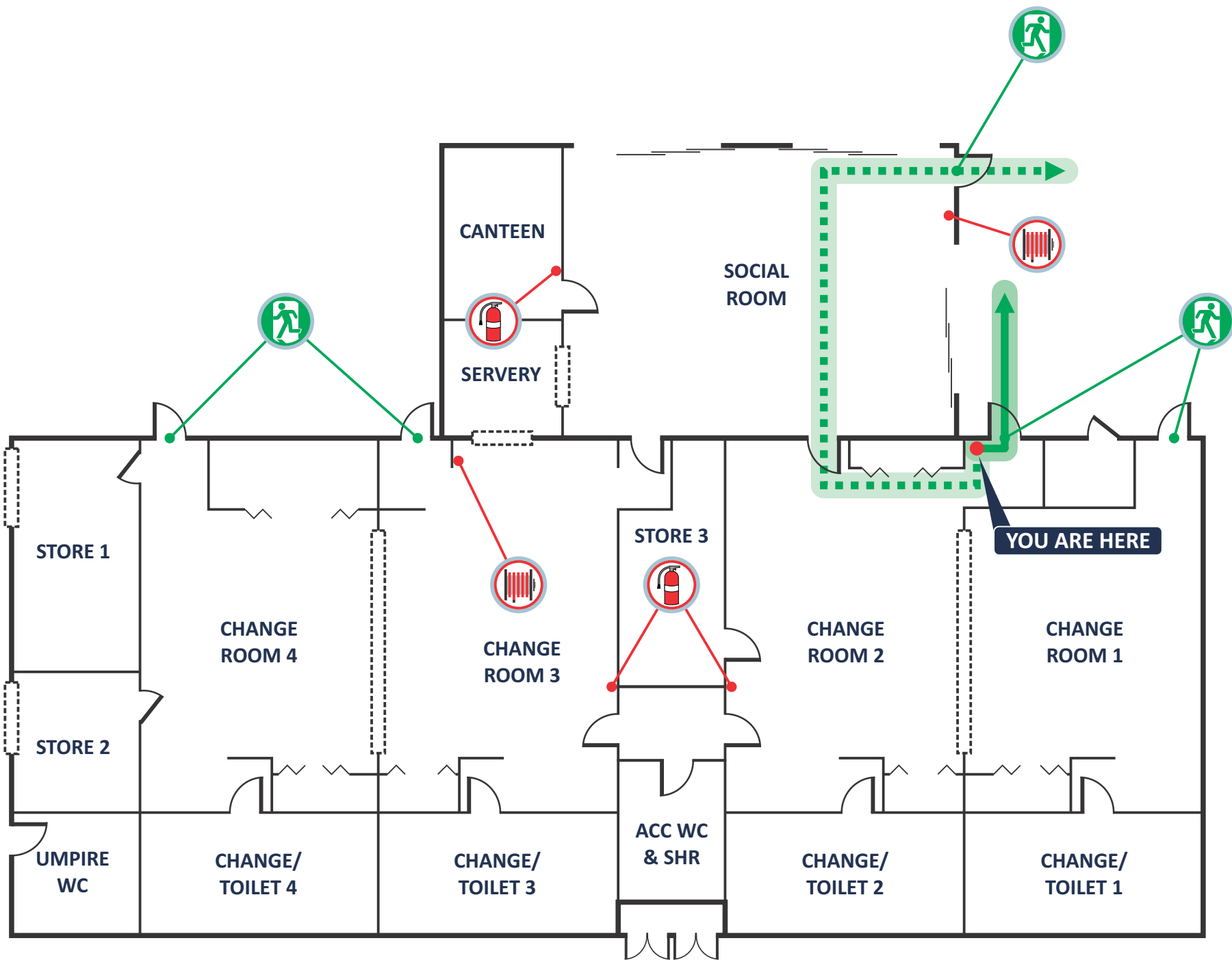
- Dial 000

EVACUATE THE BUILDING

- In the event of the smoke, fire or emergency incident worsening, EVACUATE immediately, via the nearest safe exit.
- When the area has been evacuated, all doors and windows should be closed to contain the smoke/fire. Do not obstruct access to Exits.

PROCEED TO THE ASSEMBLY AREA

- Refer to Site Plan and await instructions from the responding Emergency Services.



LEGEND

Fire Extinguisher
DCP

Fire Hose
Reel

Exit

Primary
Evacuation Route

Secondary
Evacuation Route

EMERGENCY SERVICES

DIAL 000

IN CASE OF FIRE

R

RESCUE

P

PULL

A

ALARM

A

AIM

C

CONTAIN

S

SQUEEZE

E

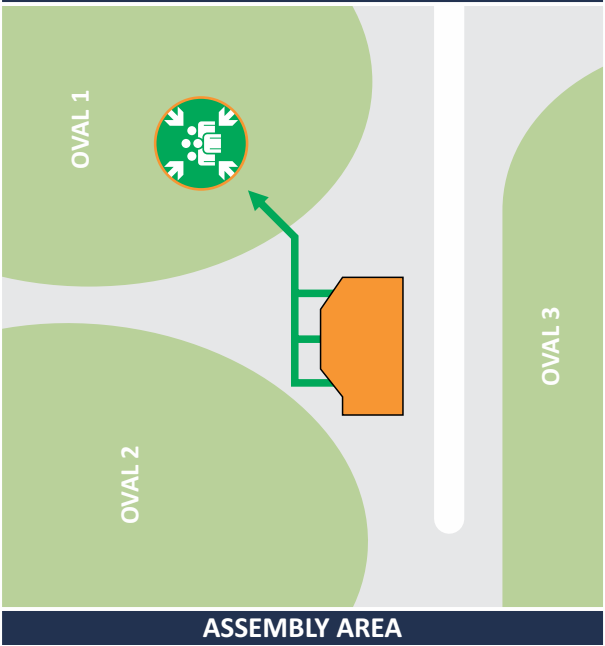
EVACUATE

S

SWEEP



GROUND LEVEL



OVAL 1

EVACUATION PROCEDURES

REMOVE FROM IMMEDIATE DANGER

- If an emergency incident occurs, move a safe distance away from the danger.
- Prevent others from entering the area and alert surrounding people.
- If safe and trained to do so, attempt to extinguish the fire/contain the emergency incident.
- Continually assess the situation and do not put yourself or others at risk.

NOTIFY EMERGENCY SERVICES

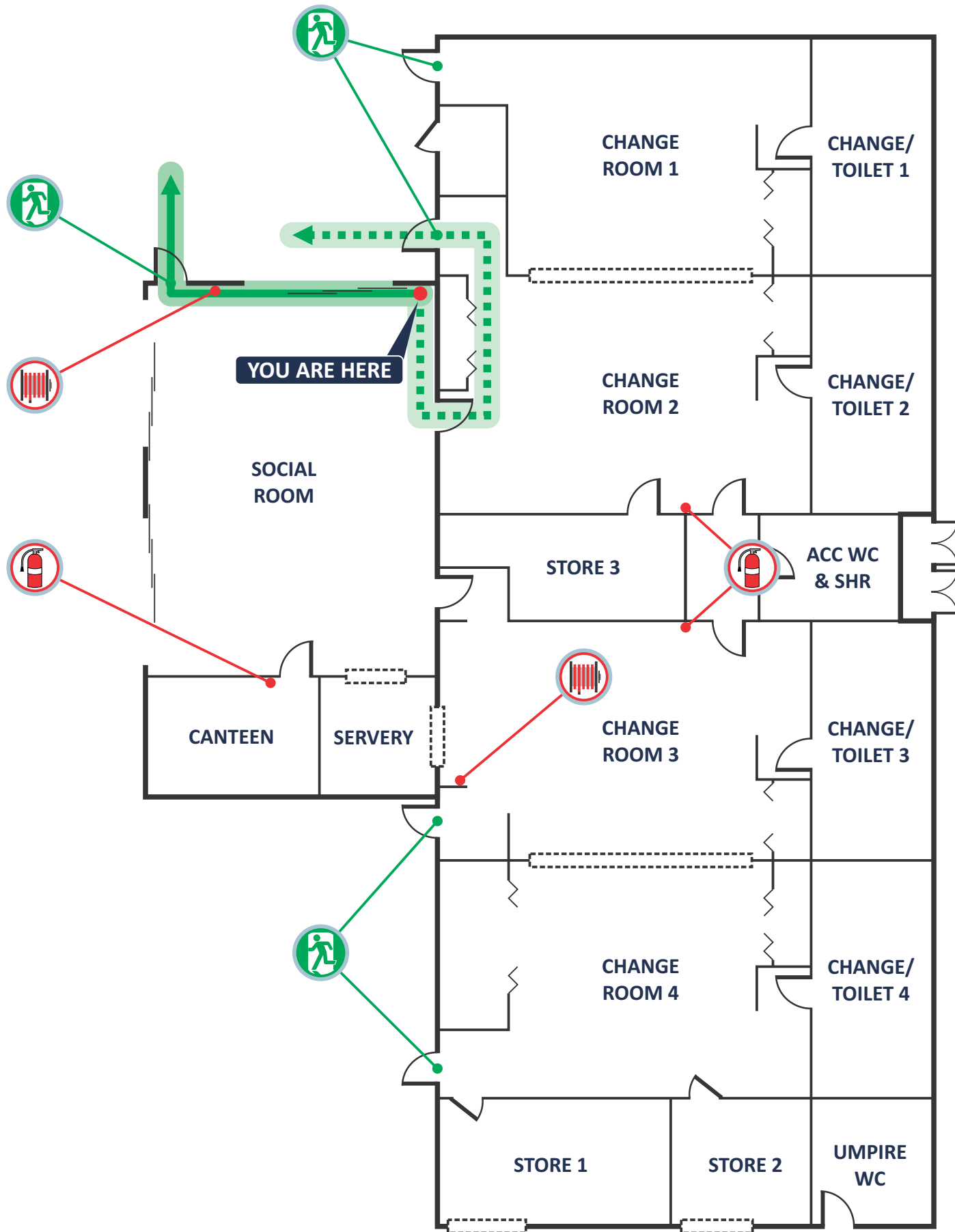
- Dial 000

EVACUATE THE BUILDING

- In the event of the smoke, fire or emergency incident worsening, EVACUATE immediately, via the nearest safe exit.
- When the area has been evacuated, all doors and windows should be closed to contain the smoke/fire. Do not obstruct access to Exits.

PROCEED TO THE ASSEMBLY AREA

- Refer to Site Plan and await instructions from the responding Emergency Services.



LEGEND

- Fire Extinguisher DCP
- Fire Hose Reel
- Exit
- Primary Evacuation Route
- Secondary Evacuation Route

EMERGENCY SERVICES

DIAL 000

IN CASE OF FIRE

- | | |
|----------------------|---------------------|
| R
RESCUE | P
PULL |
| A
ALARM | A
AIM |
| C
CONTAIN | S
SQUEEZE |
| E
EVACUATE | S
SWEEP |